

you can
Canon

CLC1160
CLC1180

Superior quality network
printers for graphic
arts professionals

*Colour beyond
your wildest dreams*



Canon's new generation CLC1160/
CLC1180 network imaging devices
break every boundary - for colour,
precision image quality, speed,
productivity, reliability and sheer
networking power.

Keeping pace with your imagination

Just how professional do you want to be?
Canon's latest digital colour solutions
extend the boundaries of what can be
achieved with an in-house printer.


Now, finally, there is a network imaging
solution that can keep pace with your
imagination.

You can produce your proofs or short run
colour documents with speeds of 11 cpm
A4 colour and 42 cpm in black and white
and with 800 x 400 dpi - 256 half-tone
gradations, all of your output will be of
the highest quality.

The CLC1160/1180 also have the
capacity to handle up to 4,400 sheets
with the optional paper tray. There are a
host of finishing options available such as

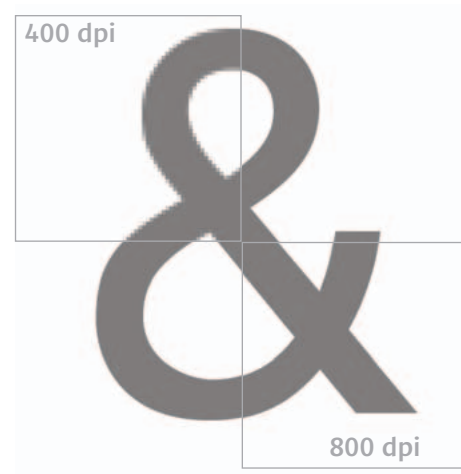
stapling and sorting with full double side
printing on the CLC1180; you can even
personalise each and every document
through variable data printing.

The CLC1160/CLC1180 Canon printers
are packed with features delivering a
range of real business benefits.



PS-NX650
PS-NX650 controller delivers the power to perform your most demanding colour print jobs with speed, ease and precision. The PS-NX650 provides fast, dependable output and great value in diverse print environments. It is a high-performance colour server that brings professional-level colour and performance to mid-range printers and copiers. When paired with the optional Fiery Graphic Arts Package, the PS-NX650 becomes a powerful solution for graphic arts professionals.

Fiery Graphics Arts Package
The Fiery Graphics Arts Package, optional for the PS-NX650, is a comprehensive suite designed expressly for graphic art professionals who want specialized tools to help them achieve their vision of colour and print quality.



Available with
optional paper tray

Consistent output

Quality and Performance

The Canon CLC1160/CLC1180 are designed for quality and performance, resulting in greater productivity, improved document management, seamless networking and assured quality of both colour and black and white output. An impressive combination of hardware and software utilities give graphic arts professionals the speed, ease of use and precision needed for the most challenging print jobs.



Features that make the difference

The Canon CLC1160/1180 innovative features improve in house colour reproduction even further, extending the quality and capabilities of print for graphic arts professionals.

The new Canon CLC 1160/1180 printers feature new Tag Bit - Technology that is designed for the perfectionist.

Tag Bit recognises type, key-lines and other solids and prints them at double the resolution of half-tones. That means no ragged edges - just clean, sharp lines.

Creative freedom

Canon's new CLC 1160/1180 models give users total creative freedom through the ability to manipulate practically every variable element in the production process.

Over-size - full-bleed effect up to A3

A3 paper measures 297 mm x 420 mm. The new Canon CLC 1160/1180 takes paper up to a maximum size of 303 mm x 443.5 mm which means that you can produce full-bleed proofs or posters at A3 after trimming.

The additional printable margin allows you to print cropmarks, margin notes, or even A3+ posters.*

* Ink saturation on the margins outside the A3 area can diminish slightly.

The following features are optional using the Graphic Arts Package:

Half-tone screening - simulates the final dots that will be imaged on films or plates.

Multiple plate separations - support CMYK plus one or more Pantone colours.

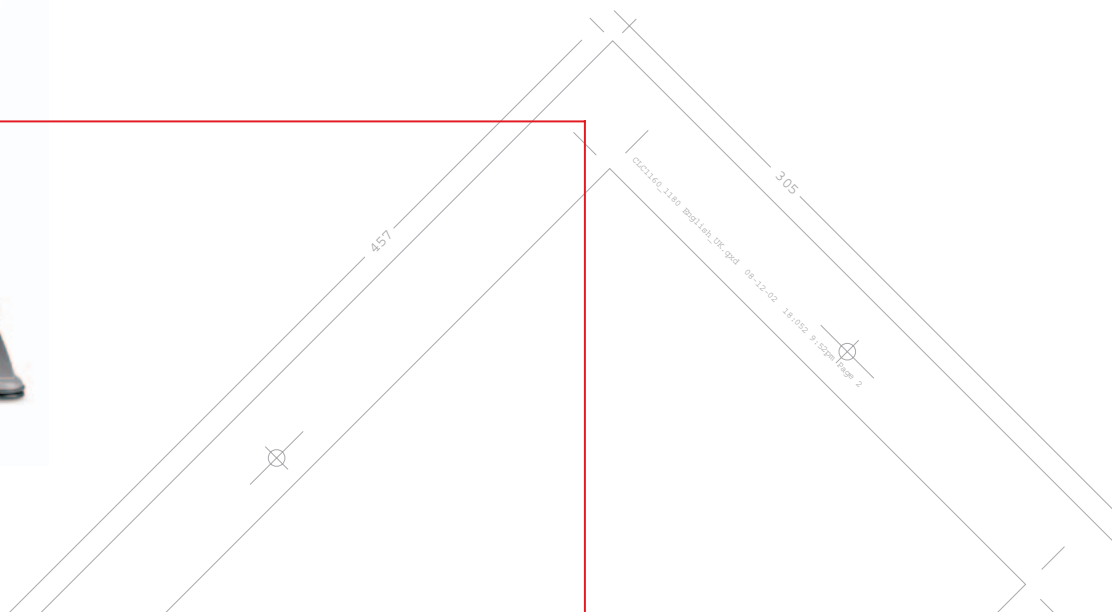
Soft proofing - shows accurate on-screen preview of ripped print jobs.

Auto-trapping - automatically corrects mis-registration.

Paper simulation - allows you to factor in the colour of the stock on which the job will be printed.

TIFF/IT input - allows input of TIFF/IT files to the RIP through a hot folder.

Spot-On colour - means you can store named colours in the Controller (PS-NX650) to ensure absolute consistency, for example whenever a company logo is printed.



PS-NX650

Combining a Canon CLC 1160/1180 printer with the PS-NX650 controller extends the scope of network printing further.

It means that anyone on the network has the facility to exploit a huge range of editing and finishing options to create stunning colour documents and A3+ posters, and, of course, print them at high speed.

The PS-NX650 brings effortless control of the production process from previews, editing, printing, sorting and finishing.

Running Fiery Command Workstation™ software, the PS-NX650 ensures optimum management and manipulation of centralised print jobs from desktop computers, advanced print and colour management and full network compatibility.

Fiery Graphic Arts Package

The optional Fiery Graphic Arts Package is a comprehensive suite of specialised design tools which enables graphic art professionals to achieve new standards of colour management and print quality.

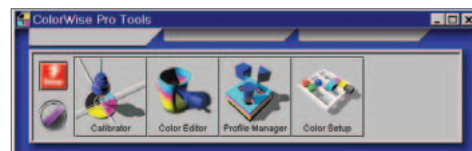
Fiery WebTools™

Administer the PS-NX650 via any Java-enabled browser. View and manage jobs as well as install drivers and utilities remotely.



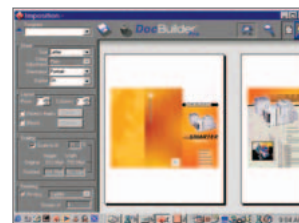
Fiery ColorWise™

Colour management software for highest quality and accuracy of colour output.



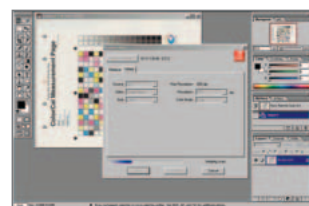
Fiery DocBuilder™Pro™ (optional extra)

Edit and assemble entire documents before RIPping the files.



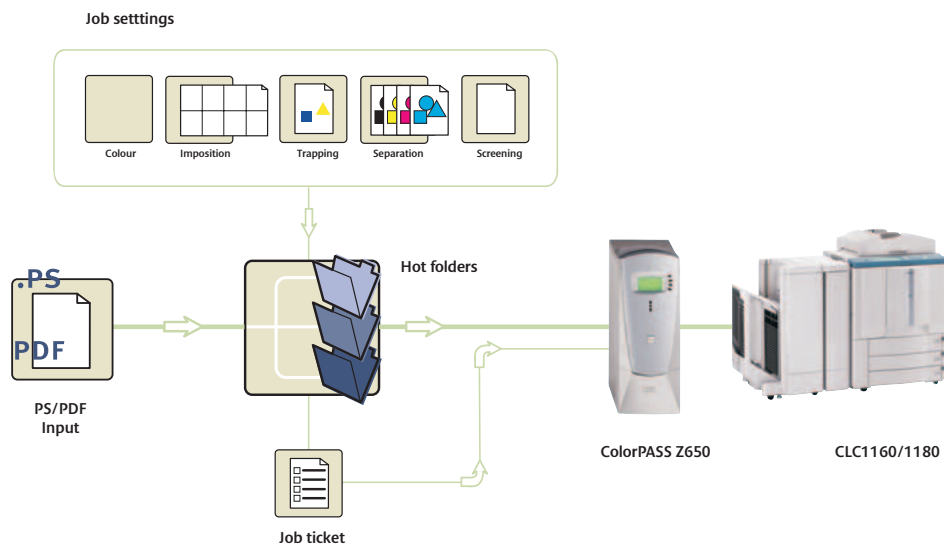
Fiery Scan™

Scan remotely and distribute via email or store.



Fiery NetWise™

Ethernet, Token Ring, Web connectivity. Perform print jobs via email.



CLC1160/CLC1180 Specifications

Copy speed: A4 full colour 11 pages per minute, A4 black and white 42 pages per minute.

Warm-up time: approx 8.5 minutes

First copy: full colour 19.9 seconds, black & white 11.4 seconds

Resolution: 800 dpi equivalent x 400 dpi 256 gradations per colour.
Copying colours full colour, mono colour and black. Zoom 25 - 400%

Acceptable originals: sheets, books and three-dimensional objects up to 2kg

Maximum original size: A3 (297 x 420mm)/11x17 (279.4 x 431.8 mm)

Maximum print size: A3 over size, 303 mm x 443.5 mm (for crop marks)

Copy paper: 209 gr/m2

Paper feeding: CLC1160:3 cassettes (550 sheets each), CLC1180:2 cassettes (550 sheets each), stack by-pass:250 sheets, (optional) side paper deck (2,500 sheets)

Modes and features: area designation mode, marker editing, double sided copying (CLC1180 only), cover mode, two-page separation, 2 in 1 mode, sharpness, frame erase mode, shift mode, colour creation mode, one touch colour, colour balance, image creation mode, multi-page, enlargement, automatic colour selection, transparency interleaving mode, auto calibration

Options: RDF (E2 Document Feeder), 20-bin stapler F1 sorter, 2,500 sheet paper deck, document tray, editor, control card

Dimensions (W x D x H): 768 x 774 x 1,000 mm

Weight: CLC1160:277.5 kg CLC1180:291.5 kg

Power requirement: 230V/50Hz

Power consumption: max.1.5 kW

PS-NX650 Specifications

Simultaneous autoswitching protocols: EtherTalk Phase II, TCP/IP, Novell IPX

Autosensing ports: RJ45 for on-board 10/100 BaseT

Automatic IP configuration

SNMP support

Printing: AppleTalk, Pserver, SMB (peer-to-peer), LPD

Regulatory Approvals

Safety: CE Mark, CSA, TUV/GS, UL, CB Scheme

EMC: EN55022 Part B (CE marked), FCC Class B, VCCI II

Power supply and consumption: Autoswitching 110/220 V 50/60 Hz for global use, 7.5 amps @ 100-127 V 3.75 amps @ 200-240 V

Dimensions: 546 x 476 x 190 mm

Hardware: Intel Pentium III CPU @ 1 GHz, 256 MB SDRAM (up to 512 MB w/ upgrade), 133 MHz system bus, 512k level two cache

EFI video interface card: Fiery RIPChips™, ECT Compression for flexible compressions ratios and visually lossless image quality

40 GB hard disk

Internal 40X CD-ROM

Internal 250 MB ZIP drive

Operating System

Windows NT

Pentium III, 256 MB SDRAM, 9.1 or 40 GB hard drive, Unix/PC/Mac compatibility

™ All company and/or product names are trademarks and/or registered trademarks of their respective manufacturers in their market and/or countries. Canon reserves the right to change specifications without notice.



you can
Canon

Canon Inc.
30-2, Shimomaruko 3-Chome, Ohta-Ku,
Tokyo 146-8501, Japan
www.canon.com

Europe, Africa and Middle East
Canon Europa N.V.
P.O.Box 2262,
1180 EG Amstelveen,
The Netherlands
www.canon-europa.com

English Edition 0033W180
© Canon Europa. N.V. 2002 (0702)

Canon (U.K.) Limited
Woodhatch, Reigate
Surrey RH2 8BF
Telephone No: 01737 220000
Facsimile No: 01737 220022
www.canon.co.uk