



The new generation of **SmartLF Gx+ 56 / Gx+ T56** large format scanners are affordable 56" wide ENERGY STAR qualified CCD devices offering high quality optimized color imaging performance, 600 dpi optical resolution, Ethernet 1000 connectivity and instant-on LED long-life illumination

Ideal for extra large, full color graphics, photographs, maps, AEC, CAD and GIS technical documents - capable of A0 / E-size landscape scanning!

What are the benefits of Colortrac CCD scanning technology?

SmartLF CCD (contact charge device) technology captures a **wide color gamut** and a **high dynamic range**.

Color gamut determines how many different colors the scanner can capture accurately; dynamic range governs how much detail the scanner can see in dark areas before "blacking out". SmartLF Gx+ scanners capture 48-bit color and 16-bit monochrome data to allow you to scan and copy exceptionally colorful images with clear shadow details.

The higher the optical resolution of a scanner the smaller and finer are the details that it can capture from the original. The 600 x 600 dpi optical

resolution of your Gx+ scanner is the highest at this size, guaranteeing the capture of **the very finest image detail**.

SmartLF Gx+ scanners combine the traditional benefits of CCD imaging - the capture of a wide color gamut and a high dynamic range - with the chief benefit of CIS (contact image sensor) scanners - the capture of sharp, fine line details in technical drawings.

The new SmartLF Gx+ scanner series provides the best and most cost-effective way to gain the benefits of both CCD and CIS imaging in one affordable device.

For capturing high quality color and fine line monochrome detail in one fast, extra wide scanner, get smart - SmartLF Gx+ 56 / Gx+ T56.

Scanner accessories

Floor stand

Minimizes the installed footprint of the scanner and positions the document feed at a comfortable and convenient height for most users to work at.

Paper catch basket

For floor stand. Catches scanned documents as they are ejected from the rear of the scanner and retains them in a holder for easy collection later.

PC / flat screen mounting

For floor stand. Combines a SmartLF scanner with a PC, screen and

keyboard to create a self-contained and practical scanning workstation.

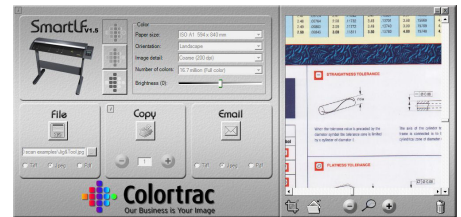


Floor stand.

Software

SmartLF All-in-One (included)

Easy to use scanning and copying software designed for nonspecialists. It includes all essential functions such as



scan to file (PDF, TIFF, JPG) and scan to copy (any Windows printer).

ScanWorks (optional)

Powerful scan to file software with a unique "scan-it-once" ability to ensure that top quality scanned images are produced in the least amount of time.

ScanWorks requires a minimum of scanner activity as **ALL** image adjustment can be made from just one scan of the document. This gives you the fastest workflow and productivity in technical document scanning today. Its interactive adaptive thresholding for flexible real-time image restoration and enhancement is "a joy.... provides the best results." (Cadalyst April 2007)

CopySmart (optional)

Simple to use but advanced professional scan to copy software with dedicated Colortrac printer driver support for market leading printers.

CopySmart gives high definition color scan and print productivity. Its color and paper management controls include quick and simple user ICC profiling, color adjustment, image cropping, paper economy and predictable copy sizing to ensure economic, professional quality color copies every time.

ISIS driver

Industry standard scanner interface for enterprise EDC/EDM scan systems.

CLASP software (optional)

(Colortrac Approved Software Products). Third party software.



The SmartLF Gx+ 56 & Gx+ T56 (thick media) scanner models are available in three performance levels with features optimized for different applications. If your requirements change, the m and c models can be upgraded on-site at your premises quickly and easily using our simple scanner upgrade process via email.

● standard ○ optional - not supported

| Feature | SmartLF Gx+ 56 / Gx+ T56 wide format scanner model: | m | c | e |
|--|---|----------------------------|----------------------------|----------------------------|
| Maximum image width | 56in (142.3cm) Image length: not limited by scanner | ● | ● | ● |
| Maximum media width ¹ | 61.8in (157cm) Thickness: Gx+ 0.08in (2mm) / Gx+ T 0.8in (20mm) | ● / ○ | ● / ○ | ● / ○ |
| Scan speeds ² in/sec | 24-bit RGB color @ 200dpi 8-bit grayscale & monochrome @ 200dpi | - 9.00 | 1.50 9.00 | 3.00 9.00 |
| Scan accuracy ³ | +/-0.1% +/-1 pixel | ● | ● | ● |
| Optical resolution | Dots per inch (dpi) 600x600 | 600 | 600 | 600 |
| Extended resolution ⁴ | Linear interpolation from 100 to 9600dpi in 1 dpi steps | 9600 | 9600 | 9600 |
| Scan modes | 16.7 million color RGB (24-bit) 256 & 16 color RGB adaptive indexed color palette (8-bit & 4-bit) ⁵ 256 level grayscale (8-bit) Black & White (1-bit) | - ● ● ● | ● ● ● ● | ● ● ● ● |
| Digital image processing (Colortrac software options provide a comprehensive range of 'post scan' image processing filters and tools) | 2D Intelligent Adaptive Thresholding (IAT) (1-bit mode) Fixed Threshold Black & White (1-bit mode) Dynamic Normalization Application (DNA) with 16-bit super sampled data | ● ● ● | ● ● ● | ● ● ● |
| Color Space | Normalized / linearized RAW RGB or sRGB | - | ● | ● |
| Color image processing | Gamma, brightness, black & white point adjustment | - | ● | ● |
| Advanced 2+3 wheel-drive | Dual precision ground drive rollers | ● | ● | ● |
| Active Paper Transport (APT) | Dual all-wheel-drive contour rollers with high grip rubber tyres Single media hold down roller optimized for superior L/R stitch Face down, front loading, rear exit media path with side or center justification Automatic media size detection with reliable optical media sensors | ● ● ● ● | ● ● ● ● | ● ● ● ● |
| Motorized Thick Media adjustment (MTM) (Gx+ T range) | Adapts the APT for media up to 20mm (0.8in) thick Automatic detection of optimum grip roller pressure Simple operation from scanner control panel at the touch of a button | ○ ○ ○ | ○ ○ ○ | ○ ○ ○ |
| All digital image sensor technology | 8 x quadri-linear CCDs each with 10,800 pixels (RGB + monochrome) Rigid monocoque chassis provides accurate camera positioning & location 48-bit primary point color image capture 16-bit primary point grayscale image capture Panchromatic monochrome and black & white | ● ● - ● ● ● | ● ● ● ● ● ● | ● ● ● ● ● ● |
| Light source | Bi-directional extra long-life LED light system for optimum object illumination and instant-on scanning capability | ● | ● | ● |
| Optics | 8 x micro lens with integral infra red filter | ● | ● | ● |
| User status & one touch operation | LCD scanner control panel provides easy walk up operation and user selection of scanner mode with stop, forward, rewind, scan & copy buttons User selectable IP address, local language options and panel overlay ⁶ MTM control buttons (Gx+ T range) | ● ● ○ | ● ● ○ | ● ● ○ |
| Scanner maintenance and user replaceable parts | Customer installable, plug 'n' play scanner Precision media calibration with DNA 16-bit super sampled data Automatic digital stitch adjustment / Easy access for cleaning Chemically treated, scratch resistant scan glass with magnetic mounts | ● ● ● ● | ● ● ● ● | ● ● ● ● |
| SmartLF All-in-One software (included) | Scan-to-file with real-time image viewer Scan-to-copy with real-time image viewer Scan-to-email with real-time image viewer Drivers, TIFF, JPEG, PNG, PDF file formats | ● ● ● ● | ● ● ● ● | ● ● ● ● |
| Interface (included) | Ethernet 1000 (2m) & USB2 (2m) data cables / local power cable Windows Image Acquisition (WIA) / Still Image Interface (STI) ⁷ | ● ● | ● ● | ● ● |
| Dimensions & weight | 72.5in wide x 7in high x 14.6in deep (184 x 18 x 37cm) 126Lbs (57kg) | ● | ● | ● |
| Power requirements | External power supply 100~250 VAC autosensing +/-10%, 50~60Hz Scanner power consumption 72Wh (scanning) 5.7Wh (standby) | ● ● | ● ● | ● ● |
| Environmental impact | ENERGY STAR and RoHS compliant | ● | ● | ● |
| Operating conditions | 10°C - 35°C, 35% - 80% RH non-condensing | ● | ● | ● |
| Scan software | ScanWorks ~ professional scan-to-archive & post scan image processing | ○ | ○ | ○ |
| Copy software | CopySmart ~ professional scan-to-print with IT8 color matching | ○ | ○ | ○ |
| EDC software | ISIS™ driver ~ connect seamlessly to EDM systems & database | ○ | ○ | ○ |
| Scanner accessories | Floor Stand 32.3in high x 21.7in deep (82 x 55cm) 31Lbs (14kg) Paper catch basket (floor stand is required) PC & LCD monitor mounting kit (floor stand is required) Document Carrier Sheets ~ Arch D / A1 & Arch E / A0 sizes with black or white backing | ○ ○ ○ ○ | ○ ○ ○ ○ | ○ ○ ○ ○ |

[1 Media wider than 59in (149.86cm) may exhibit some degradation in the image.] [2 The scan rate is proportional across the full range of resolutions supported by the scanner. Actual scan times will depend on the host system performance. Quoted top speeds may be limited by the effective bandwidth of the USB2 or ethernet if and are not guaranteed for all media types.] [3 The achieved scan accuracy may vary depending on the operating environment and the type & thickness of media.] [4 The maximum resolution & size selectable for an image is limited by the file format specified, the available disk space & the computer operating system.] [5 16 color RGB (4-bit) adaptive indexed palette images are a feature of the optional Colortrac ScanWorks software.] [6 Languages supported: Arabic, Chinese (Traditional), English, French, German, Italian, Japanese, Korean, Portuguese, Russian, Spanish.] [7 Microsoft WIA / STI is specified for the USB interface only.] [For Colortrac's recommended minimum PC specification go to: www.colortrac.com/support/system_requirements.htm.] [Colortrac SmartLF Gx+ scanners comply with ENERGY STAR, CB, CE, FCC, UL and RoHS standards and regulations.] Colortrac Ltd makes no warranty of any kind with respect to the information contained in this document and reserves the right to change specifications without notice. Colortrac and SmartLF® are trademarks of Colortrac Ltd. All other trademarks are the property of their respective owners. Copyright © 2010 Colortrac Ltd.